



The Jed Foundation

The Jed Foundation (JED)

Protecting emotional health and preventing suicide for teens and young adults nationwide

Who We Are

JED is a leading nonprofit that protects emotional health and prevents suicide for our nation's teens and young adults. We're partnering with school districts, high schools, colleges, and youth-serving community-based organizations to strengthen their mental health, substance misuse, and suicide prevention programs and systems. We're equipping teens and young adults with the skills and knowledge to help themselves and each other. We're encouraging community awareness, understanding, and action for youth mental health.

Our Why

Suicide rates are too high:

- ▶ Suicide is the second leading cause of death among 15 to 24-year olds, and rates have increased over 30% in the last 15 years.
- ▶ In recent years, 20% of high school students ([YRBS, 2023](#)) and 27% of college students ([ACHA, 2025](#)) had serious thoughts of suicide.

Youth need more mental health support:

- ▶ 33% of 18 to 25-year olds live with a mental health condition, such as anxiety or depression ([SAMHSA, 2024](#)).
- ▶ 40% of high school students reported persistent feelings of sadness or hopelessness ([YRBS, 2023](#)).
- ▶ 20% of young people ages 12-17 (nearly 5 million) had depression or a substance use disorder, and in the past year nearly 800,000 had both ([SAMHSA, 2024](#)).
- ▶ Among young people with depression, 40% did not receive treatment for their depression in the past year ([SAMHSA, 2024](#)).



JED's Impact



Addressing student mental health is no small undertaking, and the structure that JED provides keeps us on track. We found the self-assessment truly enlightening and look forward to engaging our school JED committee and other staff to make changes that will support all members of our student body. ”

—Malissa Northup, Associate Principal of Weymouth High School in Massachusetts

JED is reaching nearly **1,500 schools and community-based organizations**, serving over **10 million youth** through its Comprehensive Approach to Mental Health Promotion and Suicide Prevention.

Learn more about [JED's impact](#).

Our Approach and Work

JED's Approach, Areas of Focus, and Signature Programs

JED's work centers on three areas of focus: Strengthening Schools, Equipping Individuals, and Mobilizing Communities.

Strengthening Schools

JED has partnered with more than 550 higher education institutions, 150 high schools, and 32 districts representing 785 schools, serving over 10 million youth through evidence-based mental health programs that lower suicide risk, strengthen schools and communities, and foster emotional well-being.

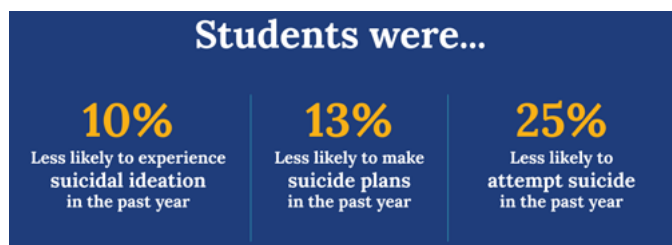
JED's signature programs, [JED Campus](#), [JED High School](#), and [JED and AASA District Mental Health Initiative](#) consult with colleges, districts, and high schools to put systems, programs, and policies in place to create a culture of caring that protects student mental health and prevents suicide.

JED's [postvention consulting services](#) help schools proactively prepare for, or navigate the aftermath of suicide or other tragic events. These services are customizable to meet the unique needs of schools and campus communities.

JED also provides [mental health education and training](#) through mental health workshops, keynotes, webinars, and trainings for students, education professionals, [community-based organizations](#) and families.

The Impact of the JED Campus Program

A recent report, [A Decade of Improving College Mental Health Systems: JED Campus Impact Report](#), analyzes a decade of data (2013 to 2023) from JED Campus schools and the Healthy Minds Network survey. The report found that schools that completed JED Campus showed significant improvements in student mental health.



Learn more about JED's work in [strengthening schools](#).



Equipping Individuals

JED engages teens and young adults where they are and in a way they'll relate to including campaigns, programmatic partnerships, and [JED's Mental Health Resource Center](#), which provides young people advice on a host of challenges with no judgment. Reaching tens of millions of young people every year, JED's work encourages healthy help-seeking and help-giving behaviors among youth in need of mental health support.

Storytelling & Culture Change

With nearly two decades of expertise working across media, entertainment, and pop culture, JED partners with creators, entertainment/media professionals, and cultural leaders to tell stories and create campaigns that support the mental health of teens and young adults.

Learn more about JED's [Storytelling & Culture Change](#) work.

Mobilizing Communities

JED advocates for policies to create a culture of caring to protect youth mental health, while working with and equipping families, friends, community organizations, and corporate partners to spread awareness, spark crucial conversations, and raise funds to prevent suicide and boost teen and young adult well-being.

Through the work of our Policy, Advocacy, and Government Relations team, JED has outlined key [policy priorities](#) focused on the endeavors likely to have the biggest impact on improving youth mental health and reducing suicide among teens and young adults.

Learn more about JED's work [JED mobilizing communities](#).